

ESSEL CRANE EC80S-93
PRODUCT OVERVIEW



Designed and manufactured with a sense for detail. You can rely on it.

USAGE

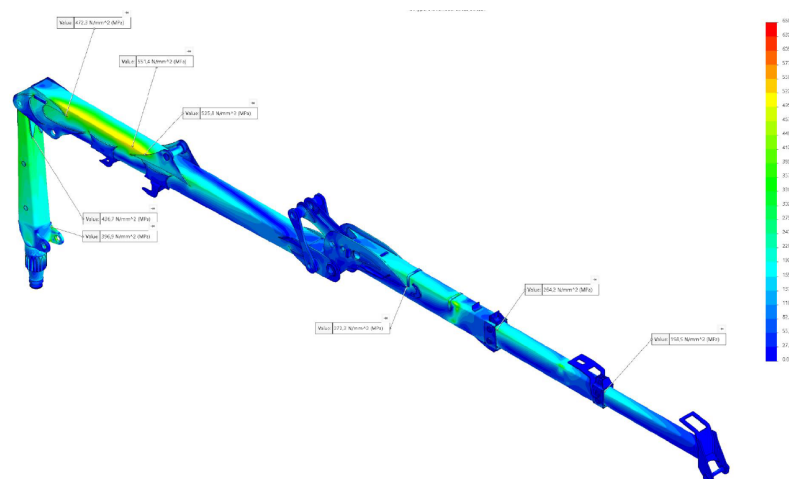
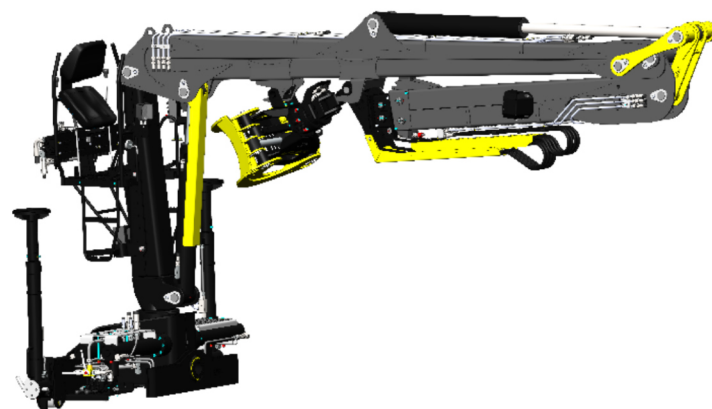
Hydraulic loading crane designed for handling timber.

KEY FEATURES

74 kNm
Maximum lifting moment

750 kg
Loading capacity when fully extended

9,3 m
Maximum horizontal reach



The results of strength calculations performed by a certified authority have confirmed that the ESSEL EC80S-93 hydraulic crane complies with the STN EN 12999 + A1 standard in terms of strength and fatigue, and also complies with the requirements of the European Parliament Directive 2006/42/EC on machinery. Strength calculations simulate an estimated number of 600,000 duty cycles.

DESIGN

SYSTEMS

TECHNICAL DATA

MECHANICS

All structural elements made of high-strength steel: swivel column- Strenx 960QL, pinion casting- heat-treated alloy GS25CrMo4V, other parts of the hydraulic crane- S690QL and S700MC
Double telescop extension
Components supplied by renowned global manufacturers Parker, Indexator
Possibility of automatic rotation of hydraulic support legs
Synchronised movement of telescopic extensions by means of chain transmission
Unified termination of the hydraulic crane telescope for mounting of standardized links of worldwide producers

HYDRAULIC SYSTEM

POWER LINK to increase the hydraulic crane lifting force and to optimize the course of the lifting force
Relocation of all hydraulic crane controls to the operator's workspace, including control of the support legs and their rotation

ELECTRICAL SYSTEM

Extended light package – lighting of the work area
ESSELTRONIC a unique electrical system with hydraulic crane overload protection, lifting force control, visual signaling of instantaneous pressures in individual circuits of the hydraulic system, working hours counter, maintenance inspection indication and many other features
New board computer, implementing functions of working hours counter, control of lifting force and momentary visual control of pressures in particular circuits of the system
Heated seat

MAXIMUM LIFTING MOMENT

74 kNm

ANGLE OF ROTATION

400 °

MAXIMUM HORIZONTAL REACH

9,3 m

WORKING PRESSURE

21,5 MPa

RECOMMENDED OIL FLOW

1x80 l/min.

WEIGHT INCL. SUPPORTING LEGS

2 390 kg

HORIZONTAL REACH / LIFTING FORCE

3m/2300kg, 4m/1750kg, 5m/1400kg, 6m/1150kg, 7m/1050kg, 8m/850kg, 9m/750kg