

ESSEL GRAB EG51

PRODUCT OVERVIEW



Designed and manufactured with a sense for detail. You can rely on it.

KEY FEATURES

5 100 cm²

Grab surface by closed jaws

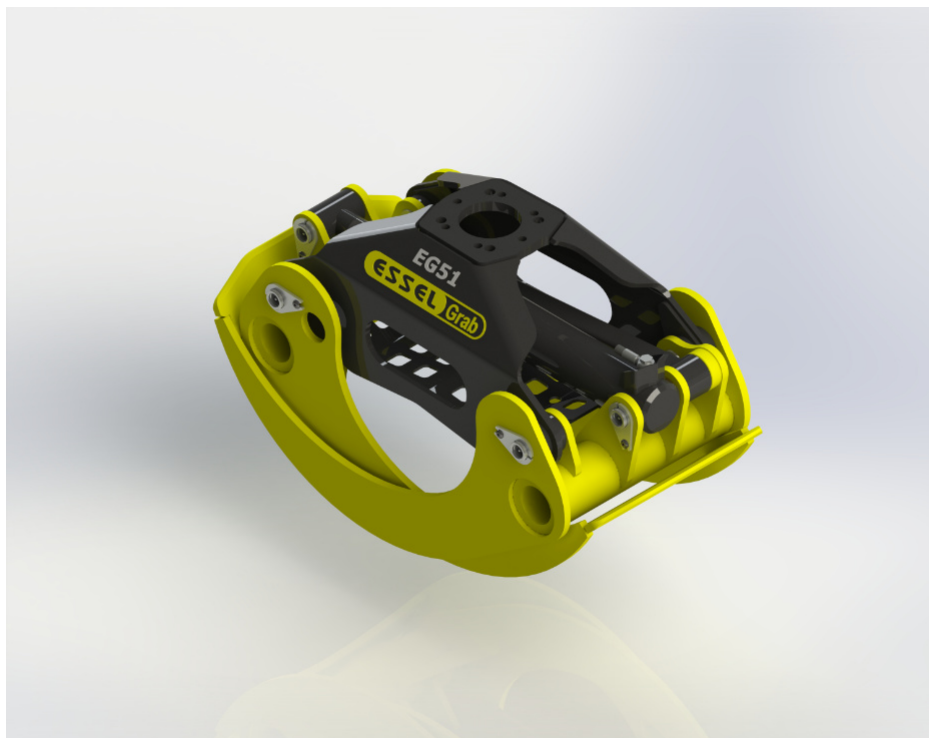
5 000 kg

Maximum load

250 kg

Weight of grab

TECHNICAL SPECIFICATION



GRAB DIMENSIONS IN TRANSPORT POSITION

Maximum width 524 mm

Maximum length 1055 mm

Maximum height 635 mm

JAW WIDTH

Inner jaw width 446 mm

Outer jaw width 496 mm

ADDITIONAL DIMENSIONS AND PARAMETERS

Height when fully extended 821 mm

Height with jaws connecting 1045 mm

Maximum deployment/gap of the grab 1960 mm

Minimum lumber diameter for grabbing 165 mm

OTHER DATA

Maximum dumping force 18 kN

Maximum operating pressure 25 Mpa